

# Renewables

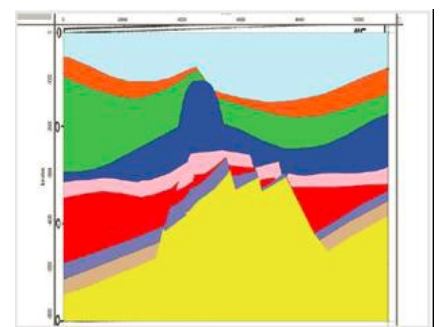
## EPI Renewable and Subsurface Services

### Environmental

- Environmental permitting & environmental impact assessments (EIA)
- Environmental management plans (EMP)
- Mitigation and monitoring
- Sound source verification and modelling
- Baseline environmental surveys
- Project management and advisory services
- Desktop studies and literature reviews
- Public consultations

### UHR Seismic Survey Design & Processing

- Subsurface de-risking to provide robust design solutions
- Full suite of modelling (OMNI, Hampson-Russell)
- Optimised shooting plan & cost analysis (SurvOpt)
- Bespoke seismic data testing and sequence development
- Pre-processing to include advanced statics, denoise and de-multiple (3DSRME & SWME)
- Time and Depth imaging solutions





# Renewables

## UXO/EOD

- Tender and contract management for UXO/EOD operations
- Project management, client representative and QA auditor
- QC/QA of visual identification of targets on pipeline, trenching, cabling and sea bed infrastructure
- QC/Management of risk mitigation
- QC/Management of UXO/EOD investigations, surveys, safe removal and disposal

## Representatives and Auditing

- Geophysical client representatives
- Geotechnical client representatives
- HSE client representatives
- Vessel HSE Assurance and Inspection (IMCA & OVID)

## About EPI

EPI is a leading independent and international energy consultancy. Established in 1987, it provides integrated technical services from geoscience, geology, geophysics and geotechnical to environmental services such as EIA and compliance through to UXO identification and removal quality control. Operating with a blend of in-house and field-based technical experts and supplemented by a suite of proprietary and licensed technologies, EPI reduces risk, adds value, and brings greater operational success to its clients, currently in over 70 countries.